

# ASPENEPSA

*( a i r m o v e s )*

for alto saxophone and playback

Full Score

First Edition

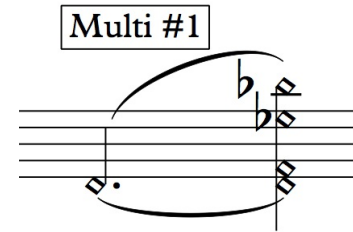
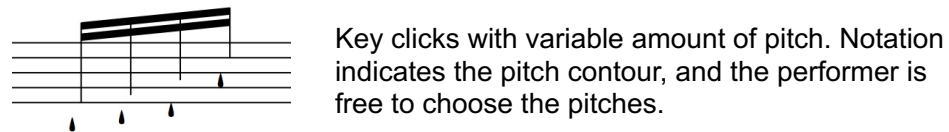
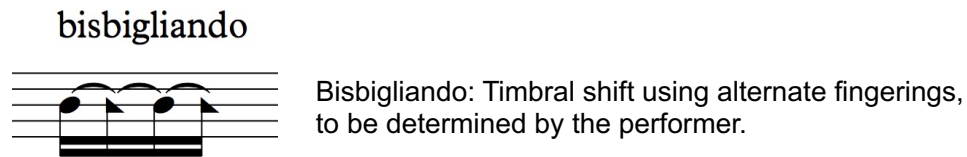
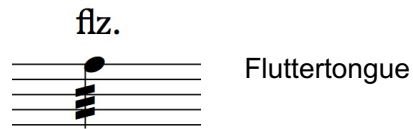
2016

## HANNAH SELIN

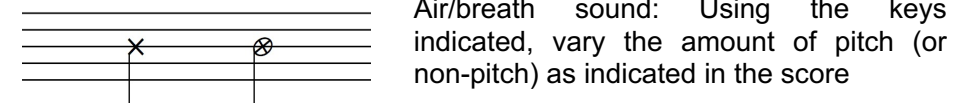
© 2016 Hannah Selin, ASCAP  
[www.hannahselin.net](http://www.hannahselin.net)  
Pyxidata Publishing  
Brooklyn, NY

## Performance Notes

This piece employs the following extended techniques. These techniques may occur separately, or they may be combined to create composite techniques.



Multiphonics: Diamond noteheads indicate the use of multiphonics. The pitches of the desired multiphonic appear as a chord, while the boxed text indicates the numeral of the specific multiphonic from the Alto Saxophone section of Daniel Kientzy's article, "Les Sons Multiples Aux Saxophones." Fingerings can be found in this article. If a single note occurs before the full multiphonic chord, that note from the multiphonic should be played alone before the chord.



## Playback

Time markers throughout the score meant to be approximate, allow the performer to synchronize his/her performance with the fixed playback. Although the timing need not be exact, it is recommended that the performer utilizes a stopwatch to assist with synchronization. Once the performer develops a sense of the form of the playback, he/she may also synchronize by ear.

# ASPENEPSA (air moves)

for alto saxophone and playback

Hannah Selin

Alto Saxophone

**Drifting** ♩ = 80  
c. 20"

**A** 2x gradually add pitch

legato

*sfz* *ppp* *p* *pp* *mp* *pp* *mf* *fpp* *sfz*

Alto Sax.

**Poco agitato**

flz.

*ppp* *sfz sub ppp* *sfz sub p* *sfz* *pp* *poco f* *p* *f* *pp* *mf* *ppp*

Alto Sax.

**B** Swiftly moving

lontano Multi #137

Multi #33

c. 1'55" ♩ = 240 bisbigliando

*pp* *ppp* *pp* (*pp cresc. mf decresc. ad lib.*)

Alto Sax.

**C**

*ppp*

Alto Sax.

*fff*

Alto Sax.

*ppp*