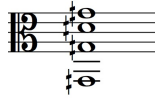


Meditation on 100

solo for singing violist

Tuning: Tune lowest string to 100 Hz (G2 quarter sharp), then tune all upper strings in relation to this fundamental. Notation reflects fingerings; sounding pitch is one quarter tone sharp.



Voice: Performer may alternate freely between vowels, or may choose a single vowel sound for the entire piece. To articulate eighth notes, use the consonant "d".

Hannah Selin

8

♩ = c. 150

Voice

ff *f*

sempre sul G

Viola

8

dim poco a poco

13

18

♩ = ♩, c. 100

mf